

Funding Formula 2025-2029

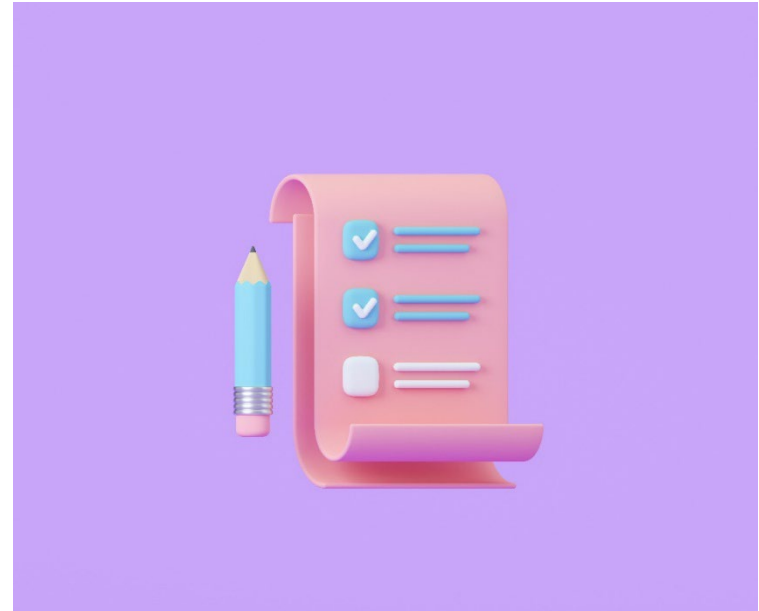
TDM Technical Committee

WSDOT TDM Team

March 2025

Today's agenda

1. Impacts for this funding cycle – Update!
2. Discussion Follow-up
3. Review Distribution Process
4. Proposal: +/- 3 Worksite Discrepancy
5. Proposal Discussion
6. Legislature Update with Don Chartock
7. Review of Funding Formula
8. Funding Formula Vote



Impacts for 2025-2029



- We are transitioning from a 2-year committee funding formula approval process to a 4-year committee funding formula approval process.
- The total funding amount has not changed.*
- ~~The average change to the amount per worksite is -0.7%~~
- Worksite counts could shift depending on survey results. This data could come after the funding formula is confirmed.

February 2025 TDM Technical Committee

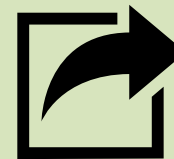
We heard:

- A. Concerns around affected worksite counts
- B. Concerns on timeline on learning budget
- C. A desire to review the current funding formula distribution process






Today we will discuss:

- A. Concerns around affected worksite counts – a **-/+ 3 exemption proposal**
- B. Concerns on timeline on learning budget – **updates on the current legislature cycle**
- C. A desire to review the current funding formula distribution process – **next slide...**



Current Funding Formula

Distribution Process		
Step 1:		Provide \$31,250 to each CTR-affected city and unincorporated area of a CTR-affected county (cities).
Step 2:		Take remaining funding and distribute on a per worksite basis to cities with more than 5 worksites.
Step 3:		Round totals to the nearest hundred.

Proposal: +/- Worksite Discrepancy

The Ask: For a mechanism that resolves the discrepancy in worksite counts and nonresponsive sites.

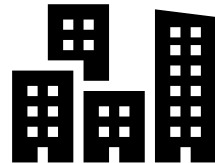
Context: While the previous funding formula cycle estimated affected worksite status. Historically, the CTR Survey tool is the mechanism to confirm affected worksites status.

Purpose: The CTR budget is constrained and major fluctuations to worksite counts impact the funding formula. Meanwhile jurisdictions find value in counting some nonresponsive worksites. This proposal seeks to address discrepancies in worksite counts in the survey tool.

Proposal: +/- Worksite Discrepancy

What are characteristics of an active worksite?

- At least one survey response recorded in the survey tool
- A program report submitted



Proposal: +/- Worksite Discrepancy

If a jurisdiction has **no difference between survey and reported worksites** in amount of ~3 more or ~3 less worksites, WSDOT will retain these numbers.

If a jurisdiction has a **larger discrepancy in their number of reported worksites** in amount of ~3 more or ~3 less worksites, WSDOT is requiring additional documentation to confirm these worksites.

*Buffer amount to be determined after data review in April.

Proposal: +/- Worksite Discrepancy

If a jurisdiction has a **discrepancy in their number of reported worksites**, WSDOT is requiring **additional documentation** to confirm these worksites.

Additional Documentation Examples

A combination of the following will strengthen a jurisdiction's request, but is not limited to:

- Submit communications with the worksite (outreach materials, flyers, e-mails, etc.)
- Testimonials from current employees
- Traffic data surrounding the worksite
- Alignment with other planning documents that impact the worksite's location
- The programmatic disruption that not including this worksite would cause

Proposal: +/- Worksite Discrepancy

3-Step Process

Step 1: Review worksites counts in the survey tool starting in April.

Step 2: Gather documentation materials as needed and submit requests by Monday, June 2nd.

Step 3: WSDOT reviews materials and provides an explanation on what worksites will be counted towards a jurisdiction's funding formula within 2 weeks.

Questions?

Legislature Update



Recommended Grant Formula for the 2025-2029 Cycle

Grant formula*	
Step 1:	Provide \$31,250 to each CTR-affected city and unincorporated area of a CTR-affected county (cities).
Step 2:	Take remaining funding and distribute on a per worksite basis to cities with more than 5 worksites.
Step 3:	Round totals to the nearest hundred.

*Pending the outcome of the legislative budget process.

Questions?
**You can always reach us at
TDM@wsdot.wa.gov**