



# Commute SmartNW

Presented by:  
LeAnn Yamamoto  
TDM Manager, Spokane County



— [CommuteSmartNW.org](http://CommuteSmartNW.org) —



# Commute SmartNW

A Regional Program in Spokane County since 1993

*Making the Northwest a Better Place to Live, Play, and Commute!*

Working with businesses to promote and encourage their employees to ride the bus, carpool, vanpool, walk, bicycle, telework and work a compressed work schedule.



— [CommuteSmartNW.org](http://CommuteSmartNW.org) —

Commute Smart Northwest, a division of Spokane County Public Works



## Spokane County Lead Agency since 1993

- ▶ Working collaboratively with 7 jurisdictions to implement regional program with 96 employers
  - ▶ Airway Heights 3
  - ▶ Cheney 3
  - ▶ Liberty Lake 7
  - ▶ Medical Lake 3
  - ▶ Spokane 53
  - ▶ Spokane Valley 18
  - ▶ Unincorporated Spokane County 9



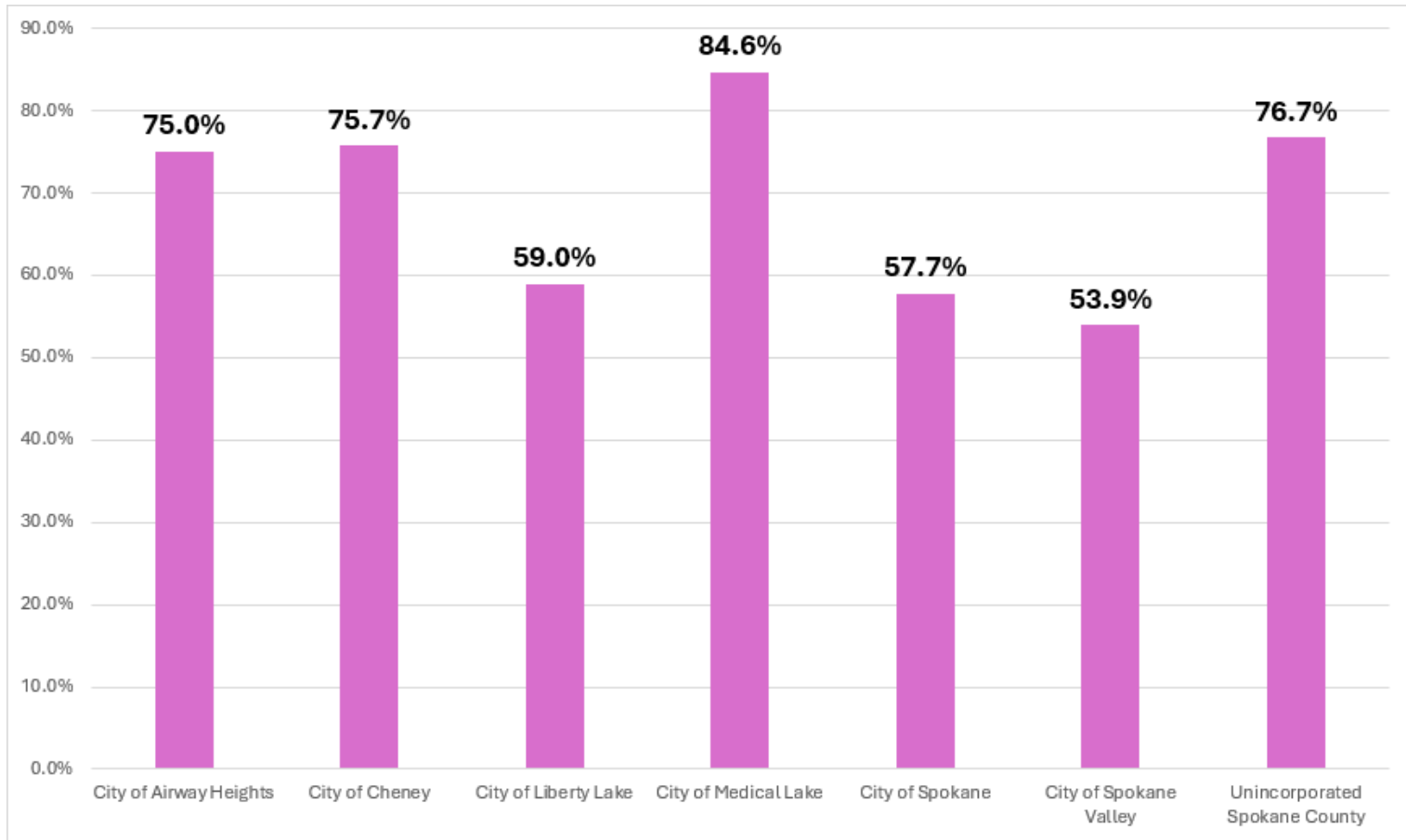


## 2024 Surveys for Spokane County

- ▶ All worksites surveyed in Spring 2024
- ▶ Baselines established for each jurisdiction
- ▶ Spokane County DAR is 60% (all 7 jurisdictions collectively)



# 2024 Jurisdictions DAR



► Spokane County DAR collectively - 60%

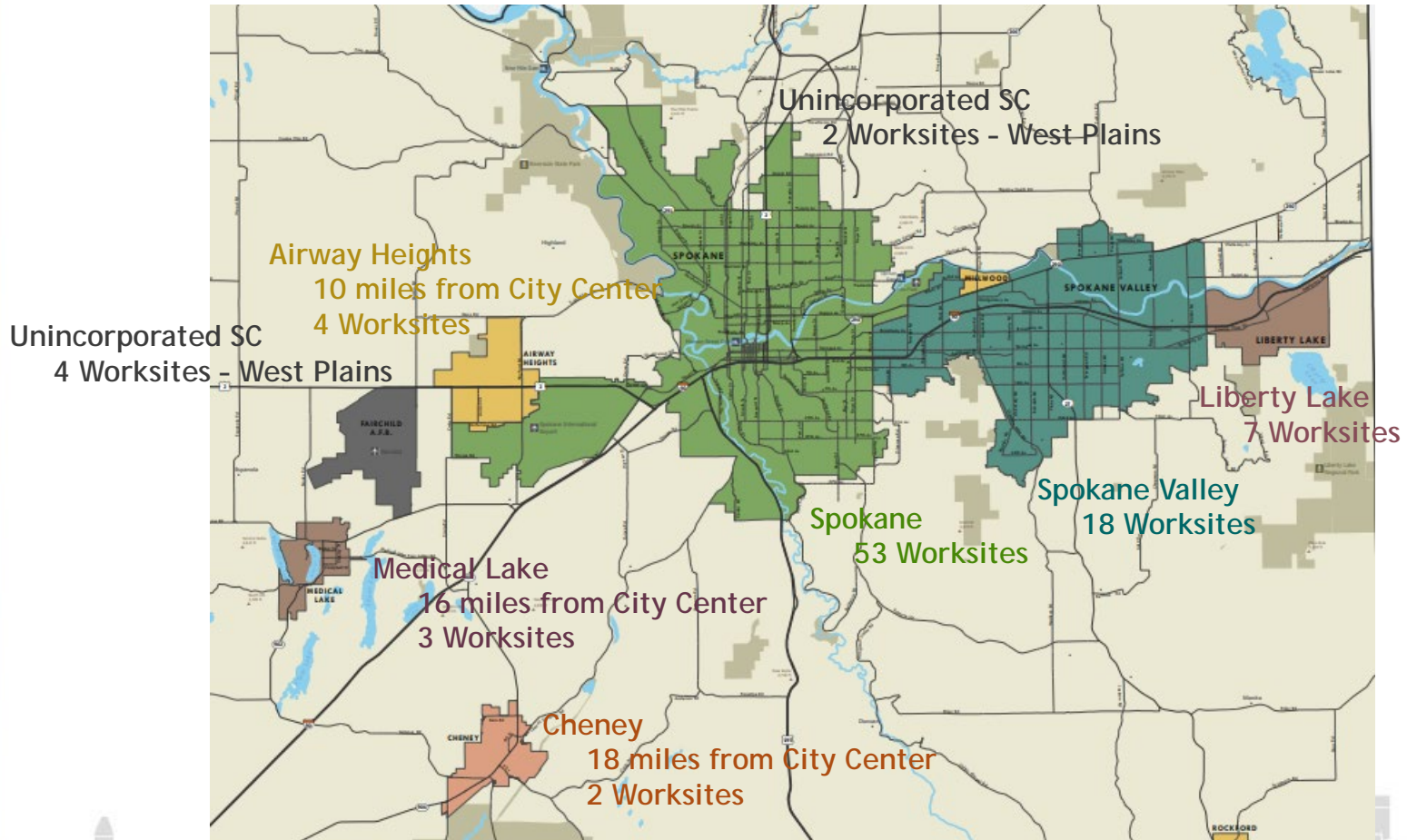


— CommuteSmartNW.org —

Commute Smart Northwest, a division of Spokane County Public Works



# Map of Spokane County





## Recommended DAR Performance Targets

- ▶ Spokane 6%
- ▶ Spokane Valley 6%
- ▶ Liberty Lake 6%
- ▶ Airway Heights 7%
- ▶ Cheney 7%
- ▶ Unincorporated Spokane County 8%
- ▶ Medical Lake 9%



# Regional Worksite Performance Targets

## DRAFT Worksite Targets

0-20%	1%
21-39%	3%
40-59%	4%
60-65%	5%
65.1 -68%	6%
68.1 - 72%	7%
72.1 - 78%	8%
78.1 - 85%	9%
85.1 - 100%	10%







## City of Spokane

- ▶ Recommend 6% reduction in DAR
  - ▶ 2024 Baseline is 57.7% DAR
  - ▶ Currently below state recommendation of 60% DAR
  - ▶ 53 Worksites
  - ▶ Range of results from 4.2% to 95.3%
  - ▶ 6% DAR reduction takes them from 57.7% to 54.2% DAR





## City of Spokane Valley

- ▶ Recommend 6% reduction in DAR
  - ▶ 2024 Baseline is 53.9%
  - ▶ Currently below state recommendation of 60% DAR
  - ▶ 18 Worksites
  - ▶ Range of results from 1.3% to 89.3%
  - ▶ 6% DAR reduction takes them from 53.9% to 50.6% DAR





## City of Liberty Lake

- ▶ Recommend 6% reduction in DAR
  - ▶ 2024 Baseline is 59%
  - ▶ Currently below state recommendation of 60% DAR
  - ▶ 7 Worksites
  - ▶ Range of results from 10.3% to 90.2%
  - ▶ 6% DAR reduction takes them from 59% to 55.4% DAR



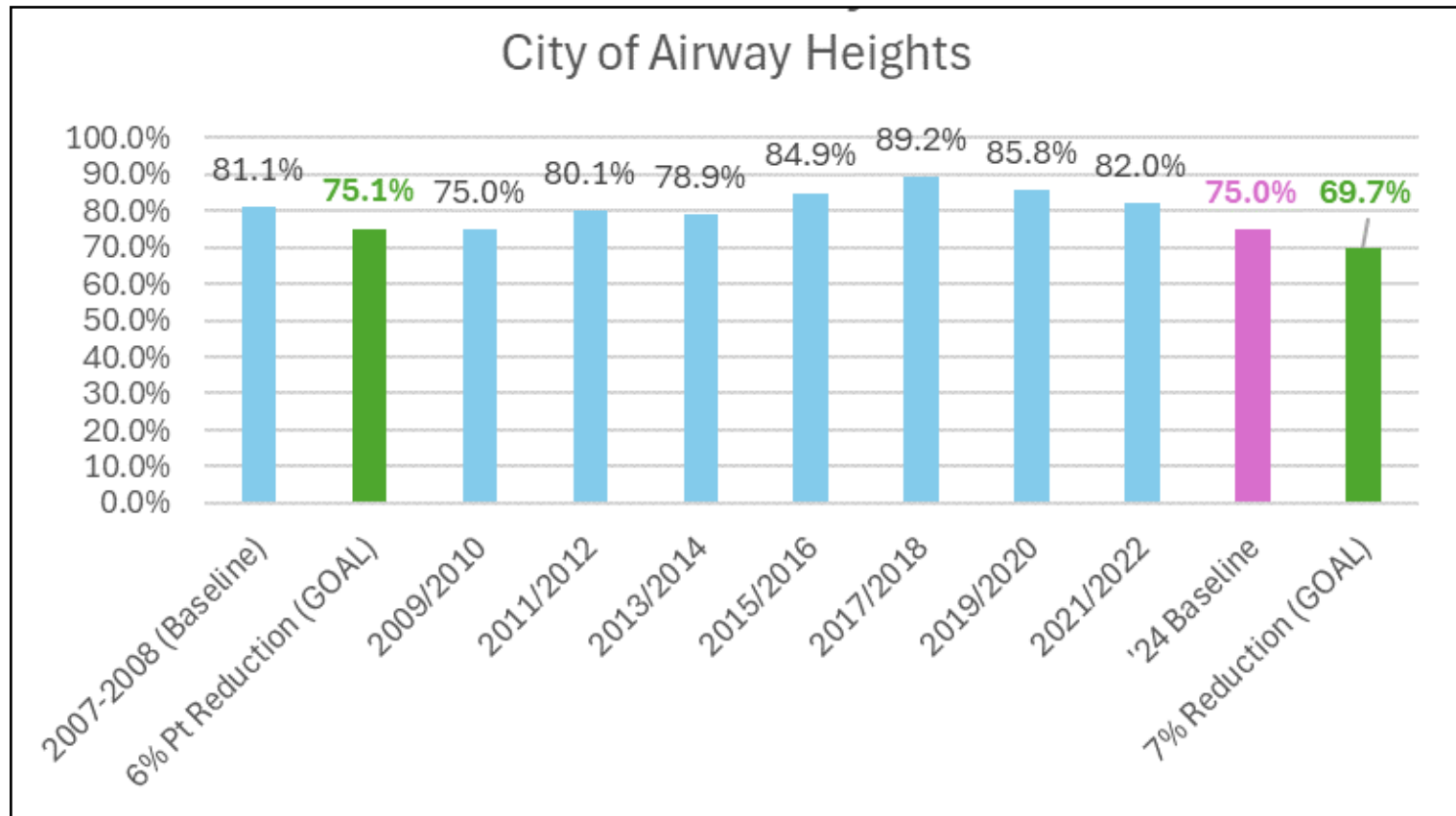


## City of Airway Heights

- ▶ Recommend 7% reduction in DAR
  - ▶ 2024 Baseline is 75.0%
  - ▶ 4 Worksites
  - ▶ Rural City - 10 miles from City Center
  - ▶ Highway 2 runs directly through Airway Heights limiting safety for bicyclists and walkers
  - ▶ Limited bus service - 2 routes service Airway Heights
  - ▶ History has shown a 60% DAR Target is not achievable



# City of Airway Heights - DAR Survey History



► 7% DAR reduction from 75% to 69.7%



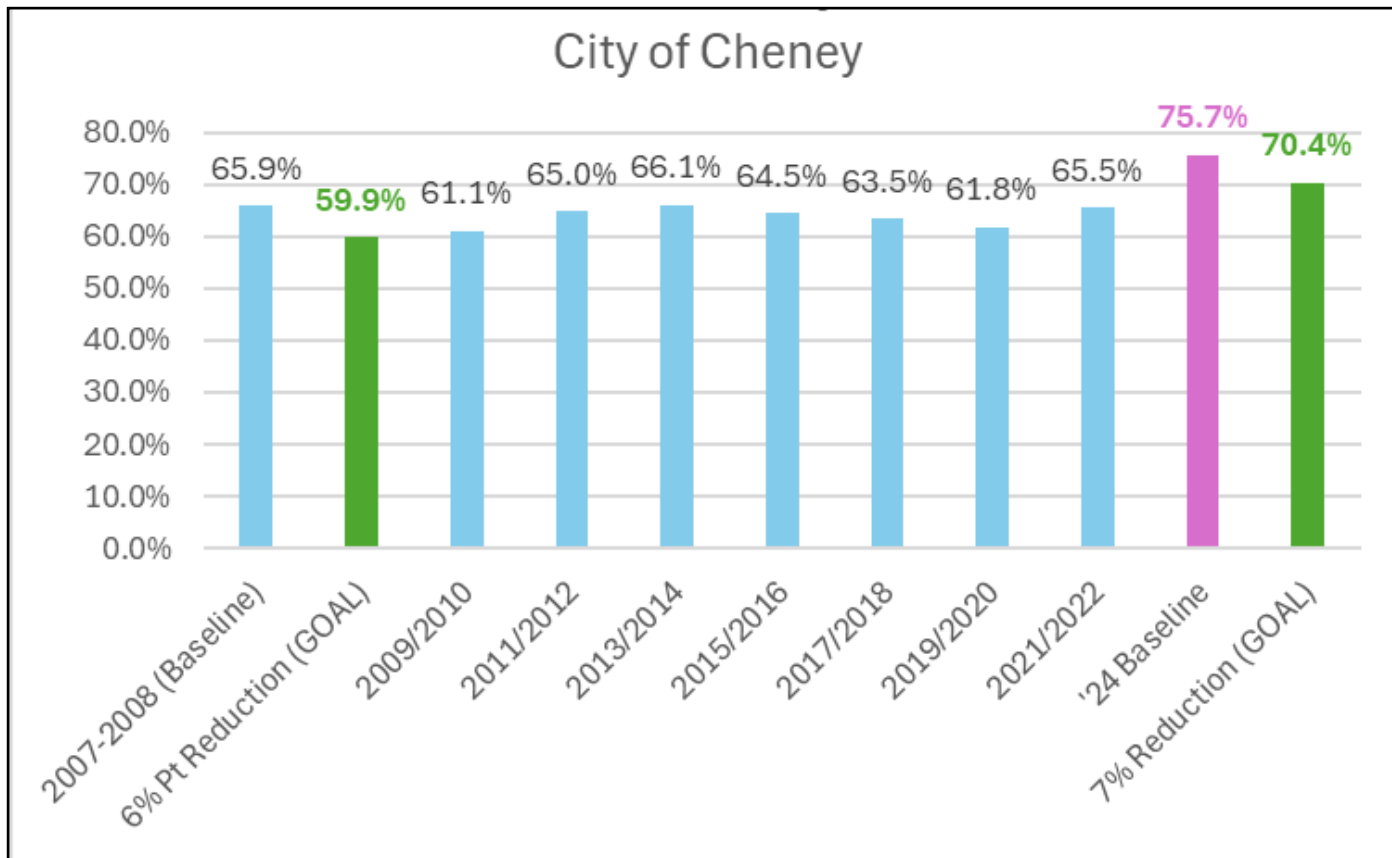


## City of Cheney

- ▶ Recommend 7% reduction in DAR
  - ▶ 2024 Baseline is 75.7%
  - ▶ 2 Worksites
    - ▶ 1 with 1200 employees and 1 with 100 employees
  - ▶ Rural City - 18 miles from City Center
  - ▶ Cheney has 7 bus routes, 5 servicing EWU and 2 servicing Cheney
    - ▶ EWU's DAR is 57.5 and Cheney's is 93.8%
  - ▶ History has shown a 60% DAR Target is not achievable



# City of Cheney - DAR Survey History



► 7% DAR reduction from 75.7% to 70.4%



— CommuteSmartNW.org —

Commute Smart Northwest, a division of Spokane County Public Works





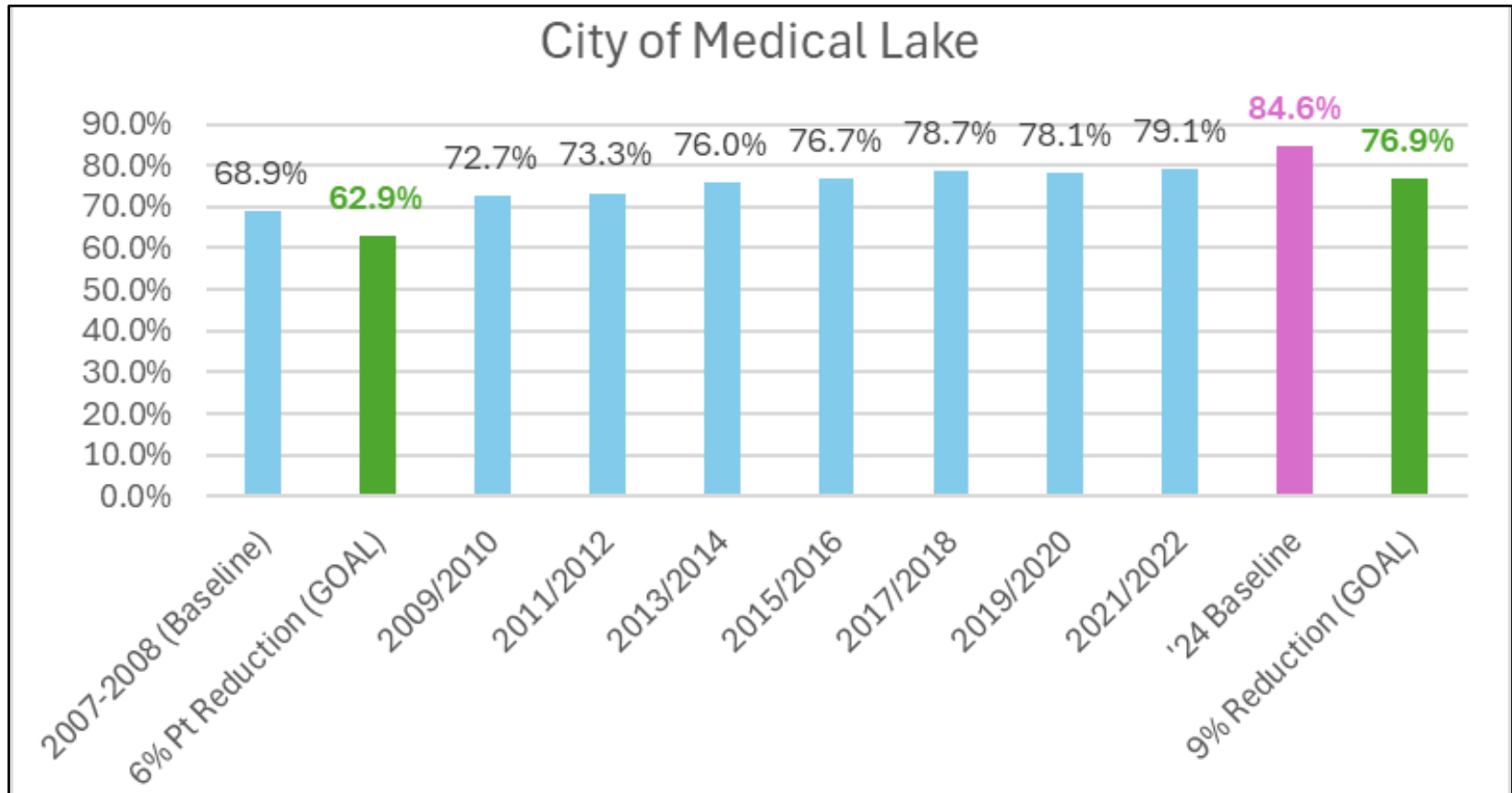
## City of Medical Lake

- ▶ Recommend 9% reduction in DAR
  - ▶ 2024 Baseline is 84.6%
  - ▶ 3 Worksites
    - ▶ 2 are medical/health care facilities, 1.5 - 2 miles from Medical Lake
    - ▶ Limited teleworking and compressed work schedules
    - ▶ No bike lanes or sidewalks to either facility
  - ▶ Rural City - 16 miles from City Center
  - ▶ Limited bus service - 1 route w/30-minute service
  - ▶ History has shown a 60% DAR Target is not achievable





# City of Medical Lake - Survey History



► 7% DAR reduction from 84.6% to 76.9%



— CommuteSmartNW.org —

Commute Smart Northwest, a division of Spokane County Public Works





## Unincorporated Spokane County

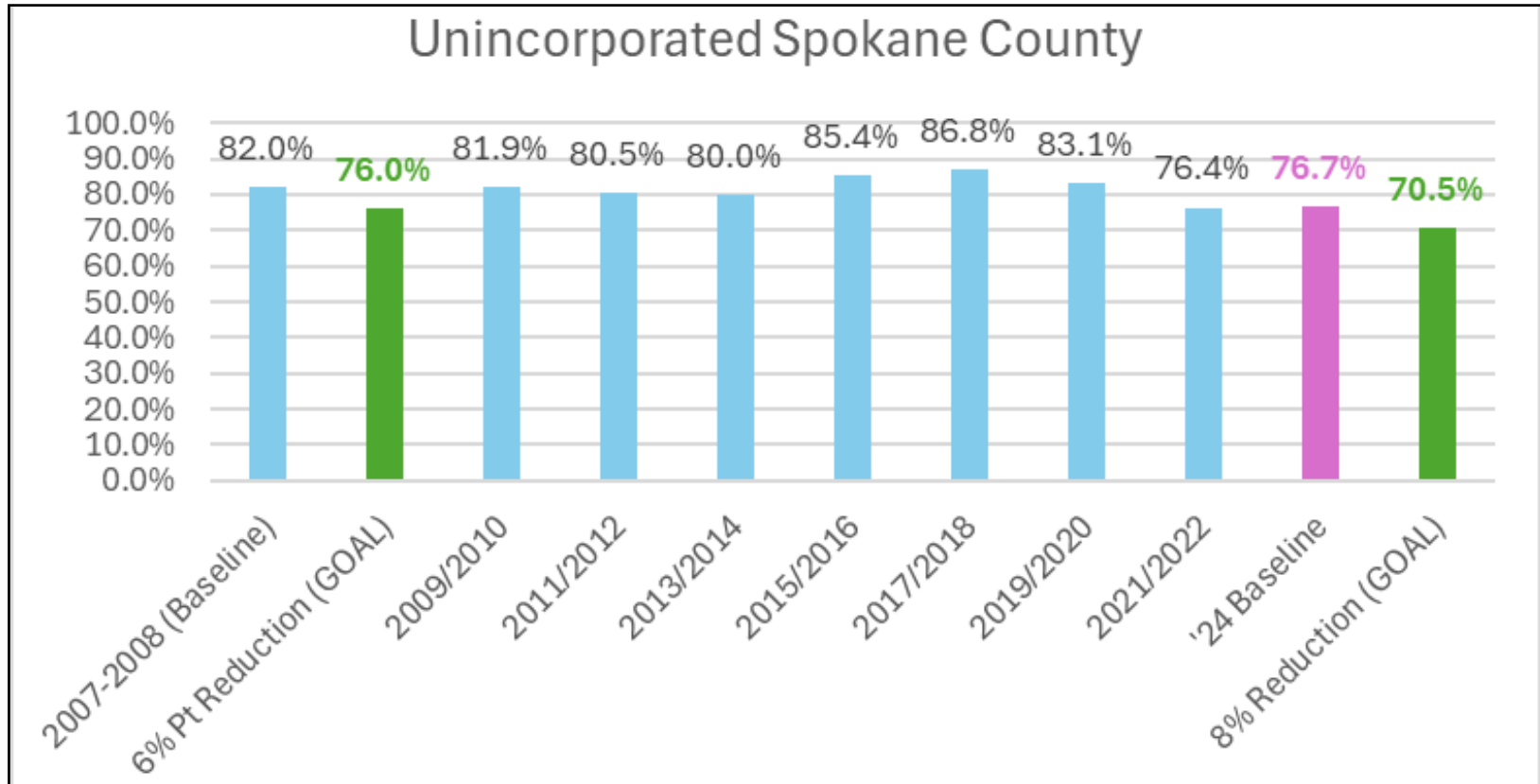
- ▶ Recommend 8% reduction in DAR
  - ▶ 2024 Baseline is 76.7%
  - ▶ 6 Worksites
    - ▶ Various locations, limited active transportation options for walking, bicycling and riding the bus
  - ▶ History has shown a 60% DAR Target is not achievable



– CommuteSmartNW.org –



# Unincorporated Spokane County - Survey History



► 8% DAR reduction from 76.7% to 70.5%



— CommuteSmartNW.org —

Commute Smart Northwest, a division of Spokane County Public Works





## Recommended DAR Performance Targets

		DAR	Target DAR
▶ Spokane	6%	57.7%	54.2%
▶ Spokane Valley	6%	53.9%	50.6%
▶ Liberty Lake	6%	59.0%	55.4%
▶ Airway Heights	7%	75.0%	69.7%
▶ Cheney	7%	75.7%	70.4%
▶ Unincorporated SC	8%	76.7%	70.5%
▶ Medical Lake	9%	84.6%	76.9%





# Commuter SmartNW

A Regional Program in Spokane County since 1993

*Making the Northwest a Better Place to Live, Play, and Commute!*

Thank you! Any Questions?



— [CommuterSmartNW.org](http://CommuterSmartNW.org) —